



**SNOWSHOE
TAHOE**

SNOWSHOE TAHOE

(530) 536-0608

www.SnowshoeTahoe.Net

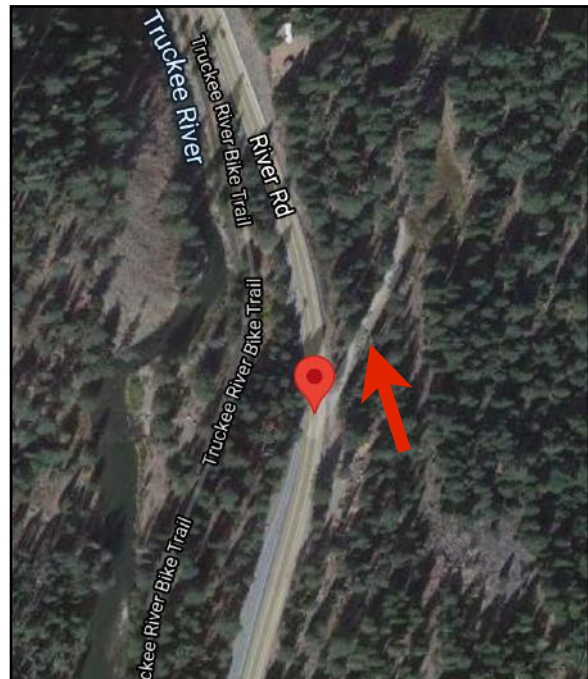
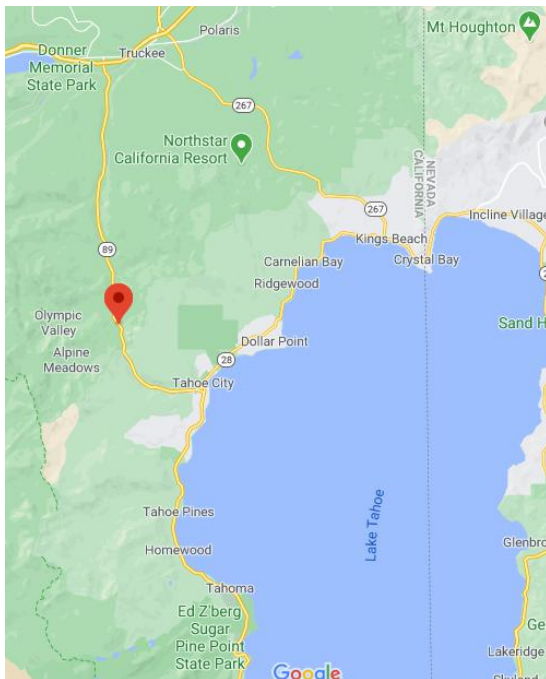
SNOWSHOE TAHOE SNOWSHOE RENTALS: TRIP DETAILS 1/2 DAY SNOWSHOEING

BEFORE LEAVING HOME:

- * Double check the meeting location, meet time, driving directions and snow conditions. Give yourself ample time to arrive on time. Winter months tend to have slower traffic as well as slippery roads. It is Important that guests arrive on time. *Please notify office if you believe you are running behind.*
- * Ensure you are bringing all necessary items for hike (check pack list below). As well leave non- essentials behind or in the car. *Snowshoe Tahoe is not responsible for lost or damaged items while out for the duration of the hike.*
- * Use restroom before leaving home, No restroom facility is available at the meeting location.
- * Pump yourself up!!! Your about to explore Tahoe's National Forest!!!

WHERE WE MEET FOR HIKING

Pauly's Point Meeting Location
2456 River Road, Tahoe City, CA 96145



2456 River Road is an unmarked Pullout, use caution pulling in from the highway.

WHAT TO BRING (PACK LIST)

Appropriate Layering: Items to consider wearing!
Check Daily weather report for proper planning

Layering

- _____ Base layer, Mid Layer, and Shell or jacket appropriate for winter weather conditions.
- _____ Winter or insulated pants.

Winter Boots (MOST IMPORTANT)

- _____ Warm footwear is key to enjoying a snowshoe outing. Try to choose footwear that is: Waterproof, Insulating & high ankle.

Socks

- _____ Wool, Fleece or polyester for the win.

Headwear

- _____ Wear a wool winter cap or beanie to protect the ears when cold. Baseball hat works well when sunny.
- _____ Sunglasses are great for the reflection of the sun off the snow.

Gloves

- _____ Water-resistant, or waterproof mittens or gloves are ideal. Check weather for necessity of gloves.

Backpack: Great to carry items you may want.

Backpack

- _____ Comfortable to carry other items such as:
- _____ Water bottle or camel back. Recommend 32oz.
- _____ Sunscreen/ or lip balm for sun
- _____ Camera
- _____ Extra clothes or layering options for changes in temperatures (optional)
- _____ Gratuities- If you feel your guide did a great job. In this industry, tips are an acceptable form of showing your appreciation for a job well done.

Note for Stormy Winter Weather

- Winter storms may exist on date of your hike.
- Extra, or thicker layers should be considered.
- Wearing cotton is **NOT** recommended and should be replaced with a fleece, polypro, or wool base layer instead.
- Goggles can be a great addition for the hike.
- Check weather forecast while getting ready.

Sunny
50°+



Cloudy
30° - 50°



Stormy
- 30°



DAY OF THE ADVENTURE



Quick Itinerary:

- Meet time : 8:45- 9:00am for our morning trip and 1:00-1:15pm for our afternoon Trip.
- Check in with guide, and sign your group in.
- From our cars we gear up and ready ourselves for the hike.
- A quick introduction to the hike and gear to prepare ourselves for the hiking portion.
- We hike roughly 800' up for about an hour. The first half is all uphill gaining elevation to our lookout at Pauly's point.
- Snack, photos and conversation is enjoyed as we take in the views.
- On our way down we meander high alpine meadows, descending through the forest.
- In total we cover roughly 4 miles taking about 3 hrs.

Guides:

- We believe having great guides and employees is what makes the adventure so memorable. Our guides are passionate about what they do and look forward to sharing that passion with you.
- Our guides are trained in CPR first aid, and varieties of higher emergency care.
- They are happy to answer any questions as well as tell you stories and tales of the trail.
- Feel comfortable and at ease with our guides on this enjoyable hike.



Snowshoe Tahoe



@snowshoetahoe

WHAT WE PROVIDE:.

- Professional instructional Guide.
- Top of the line Snowshoes, poles, and necessary equipment for the trip.
- Extra layering if needed.
- Snacks.

Participant Responsibilities

- To Ensure an enjoyable and successful trip it is imperative that all guests follow the safety policies and procedures of Snowshoe Tahoe, along with abiding to state, local, and federal laws.
- Participants are required to sign a liability release/ assumption of risk form prior to our hike. They can be printed out at home or signed at our meeting location.
- Your safety is our number 1 goal. Please listen to all instructions to help us meet that goal.



Cancellation Policy

- Our Cancellation policy is the fairest in the industry.
- You can cancel, make changes, additions, subtractions up until 48hrs prior to the day of the trip with no penalty.
- Once within the 48hrs of your trip your reservation is firm and payment for the trip in full is required on the day of the tour.